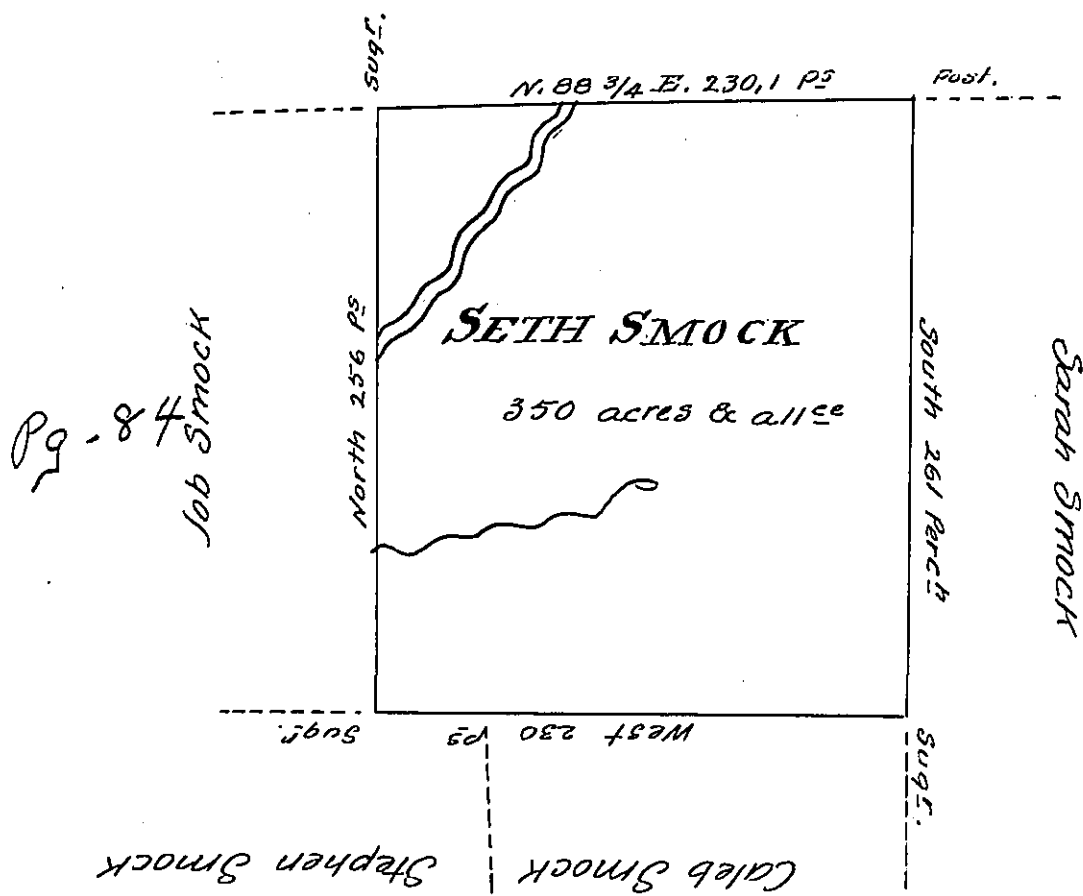


District Line



Situate on the East side of French Creek in Allegheny County  
 Containing 350<sup>ac</sup> & allowance of six per cent for Roads &c. Surveyed  
 Day of  
 the 29<sup>th</sup> May 1795 In pursuance of a Warrant dated 10<sup>th</sup> day of Aprile  
 1793.

Wm Power D<sup>y</sup> Sr.

To Daniel Brodhead Esq<sup>r</sup>  
 Surveyor General.

IN TESTIMONY that the above is a copy of the original remaining on file in  
 the Department of Internal Affairs of Pennsylvania, made  
 conformably to an Act of Assembly approved the 16th day of  
 February 1833, I have hereunto set my hand and caused  
 the Seal of said Department to be affixed at Harrisburg,  
 this nineteenth day of December 1906.

*Geo A Brown*  
 Secretary of Internal Affairs.